

APPENDIX 1: FAMILIES MATTER STRUCTURE



FM is

FM is a multi-agency programme that provides co-ordinated and intense support to families with multiple and complex needs

FM Criteria:

At least 2 of 3 of:

- Adult out of work
- Child excluded or persistently absent
- Youth Offending or ASB

FM Aims:

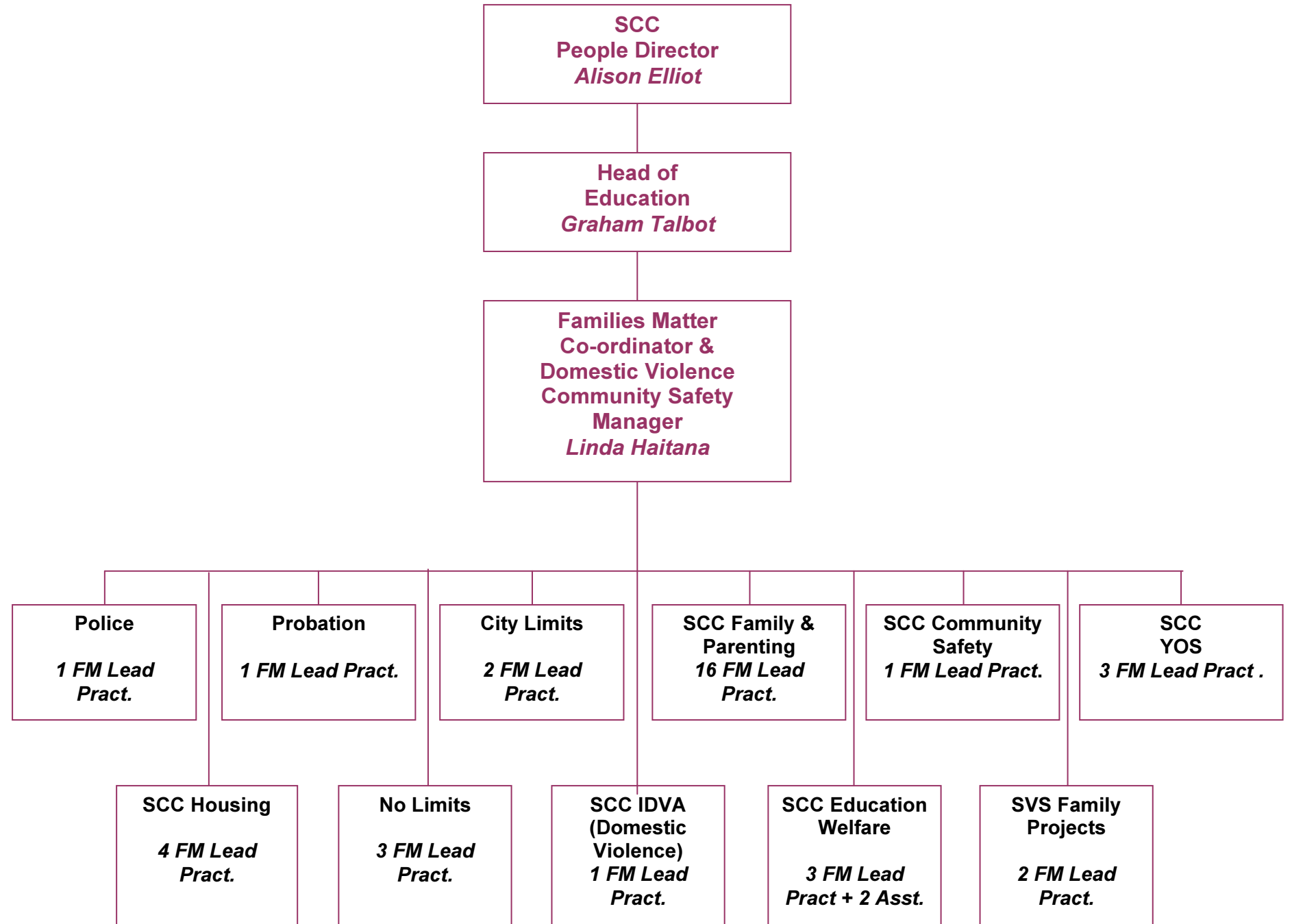
To provide extra help to turn around the lives of **685** families by April 2015 (593 families in 2013/14).

To work differently with agencies and families, taking a “whole family” approach.

FM Outcomes:

To improve the lives and outcomes of families and reduce costs to the public purse.

CORE TEAM



Core Team: 35 FM Lead Practitioners
11 Services
5 Agencies